

Discover the **ALUCOR** advantage.

**Your proven EPC partner across
the Middle East & beyond.**



ALUCOR

www.alucor.com



About us.

A LUCOR is an innovative international engineering, procurement and construction (EPC) contractor with state-of-the-art manufacturing and fabrication capabilities, and expertise in oil and gas, petrochemicals, ports and marine, power and water, mining and metallurgy, and infrastructure industries.

Leveraging advanced design engineering software and one of the Middle East's largest

manufacturing facilities, ALUCOR brings a unique modular-build approach to its work on some of the biggest, most complex and most strategic projects in the region and around the world.

Through engineering, project management, procurement, fabrication, construction, commissioning, maintenance and upgrade services, we support customers by collaboratively and transparently delivering safe, high-quality, cost-efficient and on-time turnkey projects.

OUR MISSION: To build a dedicated and innovative workforce that plans, engineers, manufactures and executes world-class construction and fabrication projects that help our customers accomplish more.



Our Vision

To become the industry benchmark in engineering, construction and fabrication by embracing technology and continuously developing core competencies.

Our Values

1

Environment, Safety and Health

Health and safety is foundational to our approach. Every day, we prioritize the health and safety of our employees, subcontractors and customers.

2

Innovation

We foster innovation as a critical differentiator that benefits customers and projects. We continually pursue modernization, upgraded technologies and systems in the areas of project management, manufacturing and construction equipment, and staff training.

3

Excellence

We are committed to excellence in everything we do, and this is reflected in the caliber of our people, our facilities, our equipment, our processes, our relationships and our products.

4

Responsibility

We take responsibility for on-time delivery, for ensuring environmental sustainability, and for delivering quality that endures. Responsibility means standing by our promises and commitments, and operating transparently and honestly.

| Our History |

Over three decades of proven expertise.

Established in 1990 and leveraging on a state-of-the-art manufacturing facility equipped with innovative technologies, Alucor has built a strong reputation in executing some of the region's most critical EPC projects.



A LUCOR was established in 1990 in Rashidiyah – a prominent industrial area in Dubai during the early 1990s, as a precision machining company focused on servicing, repair and re-conditioning of mechanical components from various industries.

In 1997, the company moved to Ras Al Khor, Dubai, establishing a state-of-the-art machining and manufacturing facility complete with the most innovative CNC equipment capable of executing large scale and complex machining projects. As the company grew over the years, we focused on more complex projects including manufacturing of mechanical parts and equipment.

ALUCOR established its first manufacturing facility in Jebel Ali, Dubai, one of the world's busiest ports, in 2003 which has, since then, grown to over 75,000 sq. mtrs.

With the availability of a world class fabrication facility and access to the port to facilitate exports, ALUCOR was able to focus on executing larger and more complex manufacturing projects.

At the same time, ALUCOR continued to improve its expertise and market position by building a diverse and valuable workforce with expertise in the design & engineering, fabrication, and construction disciplines. As such, the company has developed a strong reputation in executing the region's most complex EPC projects for over 15 years.

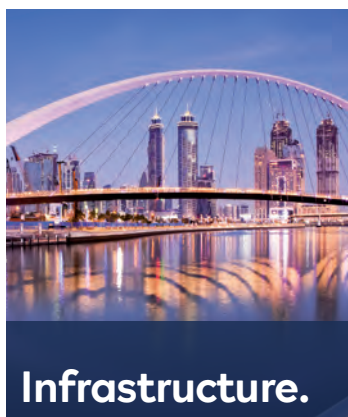
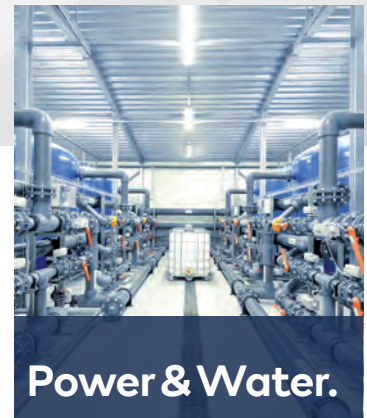
In 2020, ALUCOR acquired quayside manufacturing facilities of over 50,000 sq. meters in Hamriyah Free Zone, which will enable fabrication, assembly, and direct load out of large structures, equipment, and modules on to sea vessels for export. The availability of this facility will also support the modular construction approach leveraged by ALUCOR to execute and deliver critical EPC projects on time.

Industries we serve.

ALUCOR is a trusted EPC partner with global expertise across varied industry sectors.

A LUCOR supports customers across a wide range of industries and sectors, many of which are pillars of economic growth and development.

Leveraging one of the Middle East's largest manufacturing facilities and advanced design technology, Alucor is an international EPC contractor with expertise in delivering safe, high-quality and on-time projects.





Mining & Metallurgy.

ALUCOR brings decades of industry experience, broad-based capabilities, and dependable delivery to help customers build robust and reliable equipment, plants and other infrastructure.

With capital costs and productivity being top priorities in the mining and metallurgy sector, **ALUCOR brings decades of industry experience, broad-based capabilities, and dependable delivery to help customers build robust and reliable equipment, plants and other infrastructure.**

From complex refineries, aluminum smelters and steel mills to durable, high-performance mining

equipment, our project management, engineering, manufacturing, and construction expertise supports customer projects across the full mining and metallurgy value chain.

Our complex projects include the Al Taweelah Alumina Refinery, one of the largest alumina refineries in the world; the ALBA Line 6 Aluminium Smelter Project, the largest brownfield expansion project in the region; and the Emirates Global Aluminium Phase 1 and Phase 2 Aluminium Smelters, which incorporate pioneering EGA technology created and developed in the UAE.

Oil & Gas.

For three decades, the region's largest oil companies and global customers have turned to ALUCOR for its innovative engineering and state-of-the-art, large scale manufacturing capabilities.

As the oil and gas sector evolves in the face of technological advances and rapidly changing market dynamics, ALUCOR brings expertise in the design and engineering, manufacture, and construction of upstream, midstream and downstream equipment and plants for onshore and offshore operations.

For three decades, the region's largest oil companies and global customers have turned to

ALUCOR for its innovative engineering, reliable construction, and state-of-the-art, large scale manufacturing capabilities, as well as quayside facilities that enable the transport of oversized assets such as columns, pre-assembled modules, heat exchangers and large skids. We deliver large, complex and highly specialized turnkey projects that incorporate our engineering, manufacturing and construction expertise, such as refineries, industrial plants, pipelines, storage tank farms and terminals.





Petrochemicals.

With engineering expertise, coordination among subcontractors, and pioneering use of modular construction and assembly, ALUCOR helps customers lower costs and speed implementation.

Petrochemicals play a central role in value-added economic development, making the timely rollout of new facilities a key consideration. At the same time, new process advancements and changing market requirements, as well as volatility in the price of oil and gas feedstock, put a premium on an agile and experienced EPC partner.

ALUCOR works alongside developers to deliver

projects that incorporate the latest and most efficient engineering design and cost efficiencies, all while meeting accelerated timelines. With engineering expertise, and pioneering use of modular construction and assembly, we help customers lower costs and speed implementation.

Our varied experience ranges from sulfur processing facilities to specialty chemicals and intermediates plants.



Power & Water.

ALUCOR brings decades of experience, extensive sector understanding, and modular construction to our power and water projects.

The power and water sector has never been more dynamic, with power plants playing essential roles in the global energy transformation. Meanwhile, improvements in water processing and production technologies offer utilities and developers new efficiencies and expanded sustainability options.

ALUCOR brings decades of experience, extensive sector understanding and modular construction

to our power and water projects. These include the manufacture and installation of structural steel, piping, and equipment for leading gas and coal-fired power plants, and desalination plants. Major projects include turnkey EPC works and supply of equipment for the DEWA 40MIGD Desalination Plant and the FEWA Independent Water Plant in Umm Al Quwain, one of the largest desalination projects in the world.

Offshore & Renewables.

We help customers design and build offshore structures and equipment that are sturdy and reliable enough for even the largest, most complex projects.

Renewable energy is an increasingly central part of every nation's long-term development plans, so building these assets right is a top priority.

By collaborating with engineering companies specialized in the innovative design of offshore and renewable infrastructure, we help customers design and build offshore structures and equipment that are sturdy and reliable enough for even the largest, most complex projects.

From boat landings and secondary steel for offshore wind farms, to seafastening for monopiles

and even the manufacture of offshore jacket foundations, ALUCOR has the necessary technical and execution expertise. Our quality and timely delivery is supported by quayside manufacturing facilities that give us the ability to manufacture large equipment and structures for offshore and renewables that can be loaded directly on to vessels for transport. Key projects include the manufacture, delivery and installation of jacket seafastening for the Moray East Offshore Wind farm, one of the world's largest offshore wind farms; and the manufacture of offshore jacket foundation components for Saudi Aramco.



Infrastructure.

By delivering on-time, cost-competitive and high-quality projects, we help customers contribute to economic growth around the world.

The strength and quality of a nation's infrastructure is essential to its ability to thrive in the modern world. From bridges and roads to futuristic architectural projects, infrastructure forms the bedrock of progress.

By delivering on-time, cost-competitive and high-quality projects, we help customers contribute

to economic growth around the world. We have participated in some of the region's most iconic projects, including Dubai Metro, the world's first driverless metro system; Burj Khalifa, the world's tallest tower; the structural canopy for Ain Dubai, the world's largest observation wheel; and the construction of major infrastructure for Dubai Expo 2020, including the Al Wasl Trellis and the Sustainability Complex.





Ports & Marine.

Our world-class design, engineering and construction teams provide supply, fabrication and installation solutions for port infrastructure

Ninety percent of global trade passes through the world's ports, making high-performing and reliable port and marine infrastructure critical – not only to port operators, but also to governments, businesses and national economic development. We bring expertise in building some of the largest port assets in the world, as well as other vital port and marine infrastructure.

Our world-class design, engineering and construction teams provide supply, fabrication and installation solutions for port infrastructure such as offshore conveyors, and bulk and container ship-to-shore cranes. For ship-lift, slipway and

ship transfer systems, we work in collaboration with **Marinlift Netherlands** to deliver complete engineering, supply and installation solutions. We also handle major ship and cargo tanker refurbishment works, including hull and deck platform structural repairs, engine overhauling, welding, and the repair of mechanical equipment such as pumps, gearboxes and motors.

Our major marine projects include Jebel Ali Port's ship-to-shore container cranes with 100-ton capacity at a distance of 100 meters from shore, and the first of its kind automated container storage solution for DP World, also operating at Jebel Ali Port.

1.



2.



Featured Projects.

1. Fabrication & installation of sea fastening structures for Moray East Offshore Wind Farm.
2. Structural, mechanical & piping installation works for Al Taweelah Alumina Refinery.
3. Manufacture, Assembly, & Installation of Bauxite Ship Unloader.
4. Manufacture of Structural Steelworks for Dubai Metro Project.
5. Mechanical installation works for a 40MIGD SWRO Desalination Plant.
6. Design and fabrication of duplex stainless steel pressure vessels.



| Alucor Services |

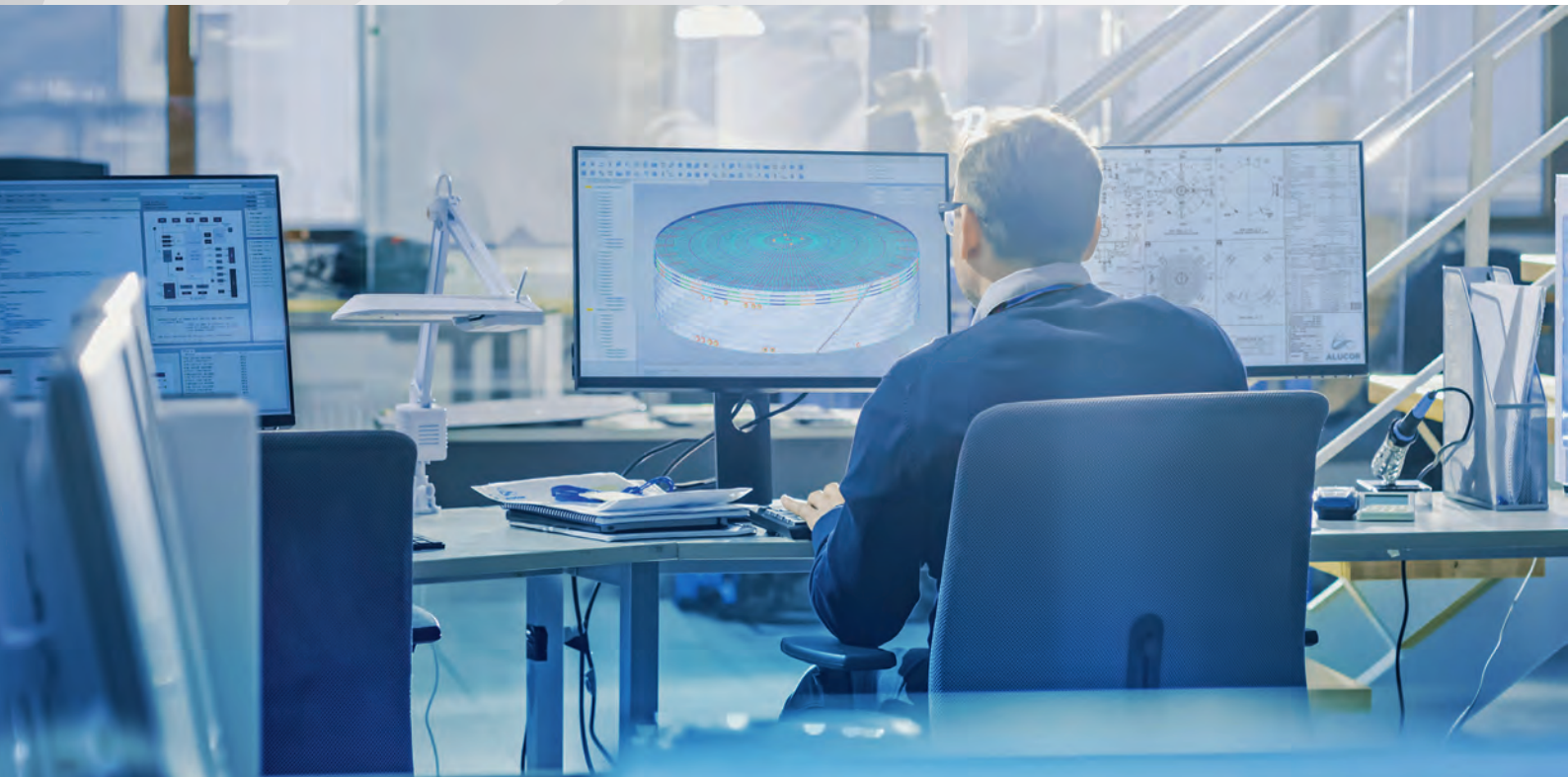
Engineering & Procurement.

At ALUCOR, we offer a range of integrated engineering and procurement services that leverage our broad expertise across sectors, our access to strategic engineering partnerships and the latest engineering software.

Through versatile and agile EPC solutions, we help customers improve costs efficiencies, enhance design performance and shorten timelines – even when building some of the world's most complex facilities.

We take a value-added engineering approach across the structural, mechanical, electrical and piping engineering services we offer. We work to understand each customer's unique project requirements, leveraging powerful design technologies.

At the same time, our procurement team has built strong international sourcing relationships, a best-pricing approach, and supply chain and logistics networks to enable high-quality, on-time, on-budget project delivery.





Equipment Fabrication.

Discover a proven strategy in our off-site modularization capabilities.

At the heart of our fabrication and manufacturing offering is a unique off-site modularization approach that reduces construction costs, optimizes schedules and improves quality.

We support this work with 3D marking, scanning, survey and measurement technology for high-accuracy manufacturing, and dimensional and quality control.

Supporting these outcomes are advanced,

temperature-controlled machining facilities that include large, state-of-the-art CNC machines up to 13 meters in length, and next-generation automation, including highly productive and reliable robotic welding.

Working from one of the largest quayside manufacturing facilities in the Middle East, we reduce logistics timelines by being able to directly load large structures and equipment on to vessels for international transport.



Construction Services.

We deploy the latest construction equipment and bring expertise drawn from our multinational workforce to guarantee project delivery.



ur in-house construction teams across civil, mechanical and electrical disciplines take an innovative approach to projects – from the design, engineering

and procurement phases to implementation, commissioning and handover. Digitization of project management and construction processes enhance our efficiency and productivity.

We deploy the latest construction equipment and bring expertise drawn from our multinational workforce to guarantee delivery of all types of construction services.

We have executed many of the region's most complex construction projects. These require intensive planning, detailed manufacturing and construction methodologies, and critical lift studies.

Major project accomplishments include successful execution of a single ball mill lift weighing more than 200 tons, rigging and installation of oversized bridge structures weighing more than 100 tons, and manufacture and delivery of 280 Jacketed Pipe Units measuring 65 meters in length and weighing 80 tons each.

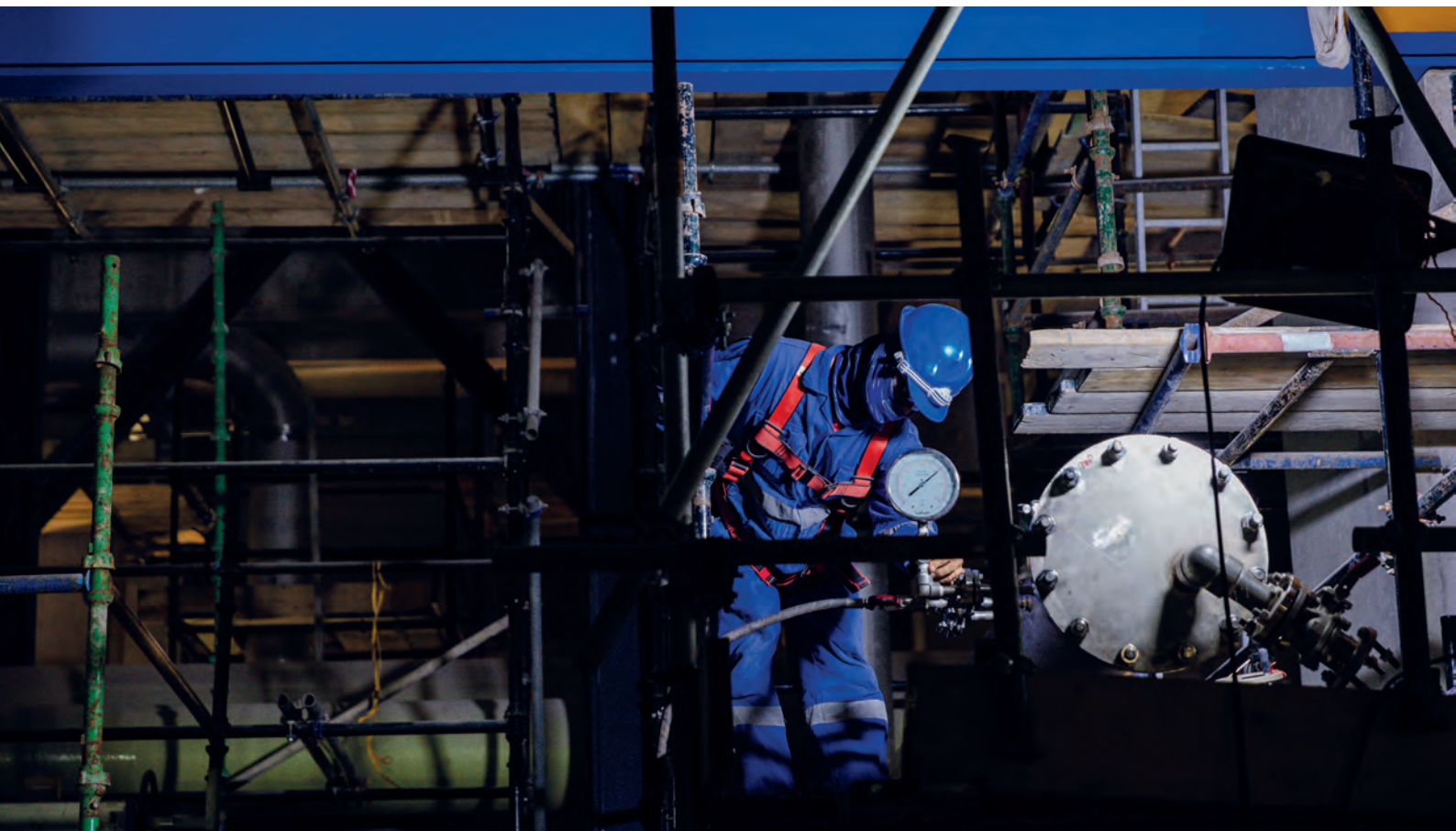
Commissioning.

We help customers design and build offshore structures and equipment that are sturdy and reliable enough for even the largest, most complex projects.

Coming at the end of large, capital-intensive projects, start-up and commissioning plays an essential role in any successful project execution. As such, ALUCOR pursues commissioning carefully, deliberately and in close coordination with all partners, suppliers and other stakeholders.

Integrated into ALUCOR's broader EPC offering, our commissioning work verifies that all equipment, systems and processes meet performance and quality requirements and are ready for full operation. Identifying and resolving any issues at this stage is one component of keeping projects on-time, on-budget and in-line with quality and performance criteria.





Maintenance.

We provide scheduled, unscheduled and emergency maintenance services, as well as shutdown maintenance and turnaround services.

In addition to designing, fabricating and installing high-quality assets, we help customers maintain their infrastructure and equipment in top shape, in order to enhance performance, improve output, and lower both operating and capital costs by extending asset life.

These lifecycle solutions include maintenance and repair of all types of industrial equipment and

infrastructure. We provide scheduled, unscheduled and emergency maintenance services, as well as shutdown maintenance and turnaround services.

Our expansive world-class facilities ensure all necessary equipment and personnel are available to handle the full range of maintenance projects, while our locations at Jebel Ali and Hamriyah Port give us quayside facilities for simplified logistics to speed turnarounds.

The Alucor Advantage.

With a deep understanding of global EPC projects, we have what it takes to both understand and exceed client expectations.



Proven Experience.

ALUCOR's success is built on its employees, who have decades of experience in engineering, manufacturing and construction.

Our employees have delivered a wide range of projects at all levels of complexity, achieving a track record of success across numerous industries and adding value along the entire EPC and fabrication value chain.

Commitment to Deliver.

ALUCOR's reputation is built on its ability to consistently deliver project objectives related to safety, quality, schedule and budget.

Our customers benefit from our unique modular construction solution that leverages our large, state-of-the-art manufacturing facilities. As a result, we help customers reduce construction costs, optimize schedules and improve quality. Availability of quayside facilities allows for direct loading of large structures and equipment on to vessels for more efficient delivery.

Quality that Endures.

Our enduring ability to deliver exceptional quality is not only about precision and attention to detail, but also our investment in innovation, automation and advanced technologies.

Through innovative technologies such as robotic welding, and 3D marking, scanning, survey and measurement, we are improving productivity, speed of delivery, accuracy, and dimensional and quality control.



**Partner with us to experience the
ALUCOR advantage.**



ALUCOR

www.alucor.com

www.alucor.com



Reach out to **ALUCOR.**

ALUCOR Headquarters

N300 Street
Jebel Ali
Dubai
United Arab Emirates

Phone: +971 (0) 4 883 1667

Email: info@alucor.com

www.alucor.com

UNITED ARAB EMIRATES

Fabrication Facility

N300 Street • Jebel Ali • Dubai • UAE

Quay Side Fabrication Facility

Inner Harbour • Hamriyah • Sharjah • U.A.E

Administration Office

Tamani Arts Tower • Business Bay • Dubai • U.A.E

OMAN

South Alkhuwair • Bousher • Muscat Governorate
PO Box 437 • Sultanate of Oman

INDIA

Parimala Towers • No. 64 MES Road
Yeswanthpur • Bangalore • India

GERMANY

Bodenseestr. 29 • 81241 Munich • Germany



ALUCOR